



CURTIS CAB FOR MASSEY FERGUSON GC1700 SERIES



PERFECT FOR ANY WEATHER CONDITION!



Curtis All-Steel Cab on GC1720 Tractor with DL95 Loader

GC1700 Series Now Fits with DL100 and DL95 Loaders

Fits Massey Ferguson GC1700 Series Sub-Compact Tractors

CURTIS QUALITY ACCESSORIES

ROOF MOUNT LED STROBE LIGHT

360° Low profile strobe light featuring Lexan® lens mounts to any flat surface on the roof of your vehicle. Fast and easy installation, weather-resistant and everything needed to mount is in the kit. Three different flash modes.



DIRECTIONAL LED SWIVEL DOME LIGHT

Super Bright LED Dome Light can Spin, Swivel and Tilt to Direct Light to where you need it most.



SIDE VIEW MIRROR KIT

Includes all Mounting Hardware. 2 Mirrors per Kit. Durable and Stylish, and can be relocated easily from Door to Frame for Summer 'No Doors' work. 13.75" H x 10.00" W.



CURTIS IS THE LEADER IN COMFORT, VISIBILITY AND DURABILITY

CURTIS FEATURES	YOUR BENEFIT
Commercial Grade	Durable Construction
Total Seal Door Systems	Easily Removable without Tools
Steel Panels are Laser Cut	Longer Lasting Finish
Standard Sliding Door Windows	Superior Ventilation
Tempered Glass Windshield	Can be Cleared with an Ice Scraper
Steel Roof	Increased Strength and Durability
One Year Limited Warranty	Curtis Quality



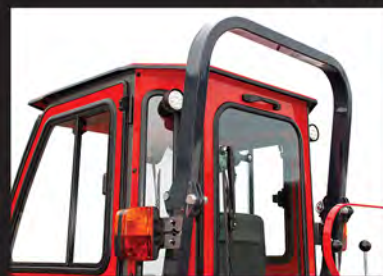


CURTIS CAB FOR MASSEY FERGUSON GC1700 SERIES



CURTIS ACCESSORIES
LED and Halogen Work Lights, Strobes, Side Mirrors and More.

Enhancing Our Customers' Comfort and Productivity Every Day



REAR LED WORK LIGHT KIT AVAILABLE



20,000 BTU CAB HEATER AVAILABLE



OPTIONAL REAR WIPER
NOTE:
All Steel Model Only

Not removable on GC1705 and GC1715 models

QUICK RELEASE REAR PANEL

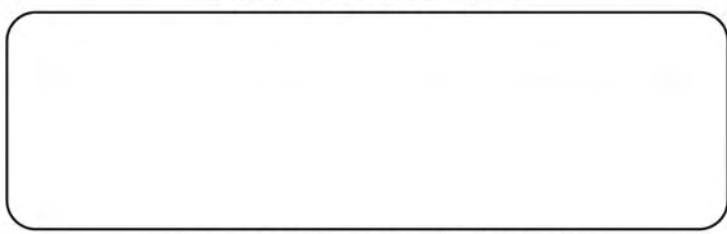


POWERFUL FRONT LED WORK LIGHT KIT AVAILABLE

SOFT SIDE CAB HAS STEEL FRAMED VINYL DOORS AND QUICK-DETACH CLEAR REAR PANEL



AUTHORIZED DEALER



*MASSEY FERGUSON IS A REGISTERED TRADEMARK OF THE AGCO COMPANY. CURTIS INDUSTRIES, LLC AND ITS PRODUCTS ARE NOT AFFILIATED WITH MASSEY FERGUSON OR THE AGCO COMPANY.