

1700 SERIES PREMIUM COMPACTS OFFER BEST-IN-CLASS |



What makes these tractors premium is advanced engineering that goes above and beyond. Featuring performance options typical of bigger tractors but with the simplicity and fuel efficiency of a compact, Massey Ferguson 1700 Series Premium compacts are ideal for general maintenance on small mixed and specialty farms, horse farms, hunting properties or for landscaping and construction.

The 12x12 power shuttle features a wet disc clutch for durability. There's no need to use the clutch pedal when changing direction.

POWER, COMFORT, CONVENIENCE AND CONTROL.

TIER 4 FINAL DIESEL ENGINES

Ranging from 36.2 to 59 gross engine horsepower, these 3- and 4-cylinder diesels are the result of premium technology and manufacturing. Turbocharged and intercooled, they feature high-pressure common rail fuel injection and electronic engine management. To meet Tier 4 Final clean air emissions requirements, these engines incorporate a diesel particulate filter that is automated for easy maintenance and operation.

MID PTO

An optional, field-installed 2,000-RPM mid PTO is also available on all models except the 1759, for driving mid-mowers, front brooms and snow blowers. Featuring hand lever gear selection, it's engaged by means of the rear PTO button.

AVAILABLE WITH GEAR OR HYDROSTATIC TRANSMISSION

Like the 1700E Series, these 1700 Series Premium compacts offer you two ways to go—with a mechanical or hydrostatic transmission. You can also choose from a power shuttle or an advanced, electronically controlled Servo-HST hydrostatic transmission.

12X12 POWER SHUTTLE

If you prefer the traditional feel of a mechanical transmission, this one is great for loader work, mowing and hauling. It offers four synchronized gears and three non-synchronized ranges, controlled by two easy-to-reach shift levers to the left of the operator's seat. An electronic power shuttle lever is conveniently located on the left side of the steering wheel to seamlessly shuttle from forward to reverse without the use of the clutch pedal. Operation is simple—and ideal for loader work.


ELECTRONIC 3-RANGE HYDROSTATIC TRANSMISSION (SERVO-HST)

For ultimate simplicity and control, this Servo-HST transmission allows for infinite speeds, without shifting gears. Just press the pedal and go, with absolute precision and efficiency. Ranges are managed by a handy left-side, in-line lever. Enhanced capabilities include push-button cruise control, auto throttle, a stall guard function and adjustments to set your maximum ground speed, as well as your acceleration/deceleration rate.

CONVENIENT ELECTRONIC REAR PTO

All Massey Ferguson 1700 Series Premium compacts boast a 540 RPM independent rear PTO that's engaged electro-hydraulically by a simple twist knob on the front dash. Features include a wet clutch for durability and a modulation button for slow, smooth start-up to prevent shock load damage.





MODELS	1736	1742	1749	1754	1758	1759
Engine HP (kW)	36.2	41.6	48.3	53.6	59.0	59.0
PTO HP (gear)	27.5	32.8	39.0	42.1	NA	45.6
PTO HP (HST)	26.3	31.6	37.8	40.9	44.4	NA
Engine type	1.7L 3-cylinder diesel			2.2L 4-cylinder diesel		
Transmission	12x12 power shuttle or Servo-HST				Servo-HST	12x12 PS
Hydraulics	11.6 gpm				12.8 gpm	
Configuration	4WD only, cab or platform					

A VERY INTUITIVE AND COMFORTABLE PLACE TO WORK.

1700 SERIES PREMIUM COMPACTS

Everything about these tractors has a premium feel, whether you choose to go with our open station platform or deluxe factory-installed cab.

Cab Features

- ▲ Two lockable doors
- ▲ Flat, rubber-coated foot deck
- ▲ HVAC standard
- ▲ Suspended cloth seat with armrests
- ▲ Pre-wired for stereo (includes speakers)
- ▲ Rear hydraulic remote valve standard
- ▲ Opening side and rear windows 6-post ROPS
- ▲ Right and left external mirrors
- ▲ Front and rear roofline working lights
- ▲ Amber marker lights at mid-level
- ▲ Front/rear wipers standard
- ▲ Replaceable cabin air filter

Standard Platform Features

- ▲ Left- and right-side steps with handle
- ▲ Isolation-mounted flat platform with rubber cover for comfort
- ▲ Steel foot deck, hood and fenders
- ▲ Folding ROPS with marker lights
- ▲ Tilt steering
- ▲ Suspended vinyl seat with armrests and retractable seatbelt
- ▲ Analog and digital front dash
- ▲ Suspended foot pedals
- ▲ Intuitive controls layout



The ROPS-certified cab is as roomy as they come in this class and offers excellent 360° visibility. And the climate-controlled environment lets you work hard and ride easy in all weather conditions.



MODELS
ENGINE
Rated Engine HP (kW)
Rated engine speed (RPM)
Rated PTO gear HP (kW)
Rated PTO HST HP (kW)
Type
Air and fuel systems
Emission control
DRIVETRAIN
Mechanical transmission
Main clutch
Shuttle lever
Hydrostatic transmission
Rear axle
Brakes
Differential lock
Front axle
HYDRAULICS
Hydraulic system
Hydraulic flow @ remotes gpm (lpm)
Loader joystick
3-Point lift capacity lbs. (kg.) @ 24"
Rear PTO
Mid PTO
OPERATOR'S AREA
Platform features
Cab features
Hood type
Seat and steering
DIMENSIONS
Overall length in. (mm)
Wheelbase in. (mm)
Overall width in. (mm)
Overall cab height in. (mm)
ROPS base weight without ballast lbs. (kg.)
Cab base weight without ballast lbs. (kg.)
Fuel capacity gal. (L)

1736	1742	1749	1754	1758	1759
36.2 (27)	41.6 (31)	48.3 (36)	53.6 (40)	59 (44)	59 (44)
2,500					
27.5 (20.5)	32.8 (24.5)	39.0 (29.1)	42.1 (31.4)	NA	45.6 (34)
26.3 (19.6)	31.6 (23.5)	37.8 (28.2)	40.9 (30.5)	44.4 (33.1)	NA
1.7 L 3-cylinder diesel, Tier 4 Final			2.2L 4-cylinder diesel, Tier 4 Final		
Turbocharged and intercooled, common rail direct injection, electronic engine management					
Closed crank case ventilation, diesel oxidation catalyst (DOC), and regenerating diesel particulate filter (DPF)					
12 X 12 power shuttle				NA	12 X 12 power shuttle
Wet multi-disc				NA	Wet multi-disc
Electronic lever, left side of steering wheel				NA	Electronic left hand lever
Servo-HST, electronically controlled 3-range hydrostatic transmission					NA
Drop-axle type with bull gear final drives					Solid axle, planetary final drive
Internal wet disc brakes, individual control via independent foot pedals					
Mechanical engagement via heel pedal					
Cast steel 4WD front axle with center drive line and bevel-gear final drives					
Open center system, gear-type pump driven by engine to supply implements and 3-point hitch					
11.6 (43.8)					12.8 (48.6)
Std. equipment, integrated into right-hand console					
2,535 (1,150)	3,086 (1,400)			3,307 (1,500)	
540 RPM 1-3/8" 6-spline shaft, electro-hydraulically engaged via twist knob					
Opt., 2,000 RPM					NA
Steel flat deck with rubber mat, folding ROPS, fuel tank under platform, suspended foot pedals, 2-side entry with grab handle					
6-post structure, 2 doors, flat deck with rubber mat, roofline work lights (2 front / 2 rear), suspended foot pedals, fuel tank under platform, HVAC, front & rear wiper					
Steel, locking with lift mechanism					
Deluxe suspended seat with armrests and seatbelts (vinyl seat on ROPS, cloth seat on cab), tilt steering					
122.0 (3,100)	130.7 (3,320)	132.3 (3,360)	132.3 (3,360)	132.3 (3,360)	134.6 (3,420)
69.7 (1,770)	71.1 (1,805)	76.0 (1,930)	77.2 (1,960)	77.2 (1,960)	77.2 (1,960)
64.2 (1,630)	64.2 (1,630)	65.4 (1,660)	65.4 (1,660)	65.4 (1,660)	71.1 (1,805)
91.3 (2,320)	91.3 (2,320)	92.9 (2,360)	92.9 (2,360)	92.9 (2,360)	93.3 (2,370)
3,362 (1,525)	3,638 (1,650)	3,913 (1,775)	4,145 (1,880)	4,178 (1,895)	4,343 (1,970)
3,803 (1,725)	4,068 (1,845)	4,354 (1,975)	4,575 (2,075)	4,608 (2,090)	4,784 (2,170)
10.6 (40)	14.5 (55)				

FRONT TO BACK, WE'VE GOT YOU COVERED.

We've got the right front loader and backhoe for whatever job you need to tackle. So you're always as productive as you can be.

COMMON STANDARD FEATURES

- ▲ Hydraulic lines routed inside loader frame for protection and visibility
- ▲ Positive locking galvanized steel bushings at all pivot points to minimize wear
- ▲ Recessed grease zerks to minimize accidental damage
- ▲ Industry-leading cycle times for performance and efficiency
- ▲ Quick-connect hydraulic lines
- ▲ Built-in parking stands

DL95 Front Loader

- ▲ Curved-boom design
- ▲ Regenerative hydraulics for simultaneous operation of lift/lower and curl/dump functions
- ▲ Factory or dealer installation available

L105E Front Loader

- ▲ One-piece main frame with tapered arms and single cross member
- ▲ Loader frame pedestal mounted joystick
- ▲ Skid steer or pin-type implement attachments

DL125 and DL135 Front Loaders

- ▲ Optional third function and soft drive available
- ▲ Universal skid steer or exclusive compact quick-attach implement tool carrier

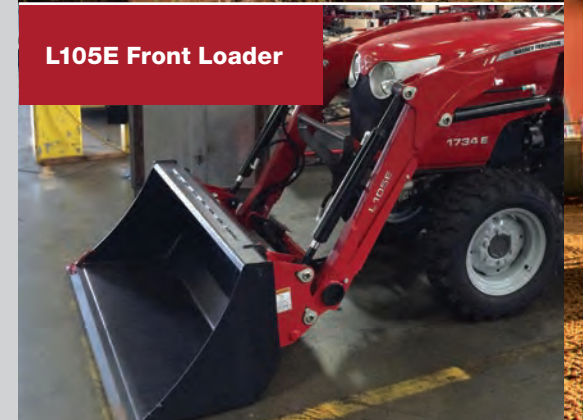
LOADER MODELS (NON-SELF LEVELING)	DL95	L105E	DL125	DL135
Compatible tractor models	All GC1700 Series	All 1700E Series	1736, 1742	1749, 1754, 1758, 1759
Max. lift height @ pivot pin in. (mm.)	72.8 (1,850)	95.7 (2,400)	102.4 (2,600)	110.2 (2,800)
Lift capacity to max. height @ pivot pin lbs. (kg.)	870 (395)	1,210 (549)	1,840 (835)	2,420 (1,098)
Breakout force @ pivot pin lbs. (kg.)	920 (420)	1,460 (660)	2,190 (990)	2,860 (1,300)
Max. rollback angle	25°	25°	45°	45°

BACKHOE MODELS	CB65	CB75	CB85
Compatible tractor models	GC1710, GC1720	1734E, 1739E, 1736, 1742	1749, 1754, 1758, 1759
Size	6.5'	7.5'	8.5'
Bucket digging force lbs. (kg.)	2,476 (1,123)	3,148 (1,428)	4,475 (2,030)
Max. digging depth in. (mm.)	77.5 (1,968)	92.1 (2,339)	99.6 (2,530)
Max. reach in. (mm.)	107.5 (2,730)	119.7 (3,040)	129.9 (3,299)
Bucket width options in.	10", 12"	10", 12", 16"	10", 12", 16", 18", 24"

DL95 Front Loader



L105E Front Loader



DL125 and DL135 Front Loaders



THE RIGHT TRACTOR FOR ANY SEASON.

If you live in colder climates, winter presents its own special challenges. And Massey Ferguson compacts offer just what you need to meet them head on. Whether you're a property owner or a contractor, you'll find that these nimble tractors are powerful, comfortable and easy to maneuver, with a wide range of implements that are easy to control.

BUILT FOR SNOW AND READY TO GO

Our goal is to make your winter work as effortless as possible. So we've given careful consideration to everything from versatility to visibility to efficiency.

The standard 4WD front axle on the GC1700, 1700E and 1700 Series Premium tractors provides additional traction in the snow for better performance. And our high steering angle enhances maneuverability. A factory loader joystick on the GC1700 Series and 1700 Series Premium tractors is integrated into the console to keep the design smooth and operation easy. And hydraulic valves at the tractor's mid-point simplify implement connection.

Top it all off with improved visibility and better ventilation on cab models to keep frost off the windows. And whether you're pushing a blade, broom, blower or bucket, you've got a compact that can handle anything winter dishes out.





We go the extra mile right from the start, to make sure our tractors go the extra mile for years to come. Rest assured, if you ever decide to trade in your Massey Ferguson compact series tractor, you can count on resale values to stay high.

WE'RE ALWAYS AT YOUR SERVICE

If you're like most farmers, when you find that perfect piece of equipment, it becomes almost like part of your family. And when you buy a Massey Ferguson, you instantly become part of ours. Our network of dealers understands what owning a hardworking productive tractor really means.

They'll advise and support you through the selection process, the buying process and through operation, maintenance and beyond. Equally important, they realize you have to be able to depend on them 24 hours a day, seven days a week.

ALL-INCLUSIVE WARRANTY

Even our warranty is high-performance, offering five full years of powertrain coverage that's fully backed in-house by AGCO—not a third-party insurer. Best of all, it's also backed by dealers who understand how to help you make the most of it.



QUESTIONS? GO TO MASSEYFERGUSON.US

Our website opens the door to all sorts of technical information and product specifications. If you can't find what you're looking for, click on "Contact Us" and we'll provide you with access to folks who can get you all the answers.

THE DOORS ARE OPEN AT SHOPMASSEY.COM

You'll find all sorts of ways to live Massey Ferguson, from the latest in wearables to gifts for the entire family. And some good old-fashioned bargains, too.



JOIN THE CLUBS

Massey Ferguson Enthusiasts of North America has grown from just 59 members in 2001 to almost 600 members today. They publish a newsletter five times a year and hold annual get-togethers at well-known tractor shows. Join now; visit fergusonenthusiasts.com.

The Ferguson Club is an international, independent members' club established in 1986 to promote and disseminate information and interest in the work of the late Harry Ferguson, Ferguson products and, in particular, the "Ferguson System." fergusonclub.com

The Friends of Ferguson Heritage Ltd. exists to encourage and assist enthusiasts in their interest in the engineering achievements of the late Harry Ferguson. fofh.co.uk

The Massey Ferguson FarmLife magazine is our exclusive publication that offers news, interviews and insights into all the joys—and challenges—of farming.